

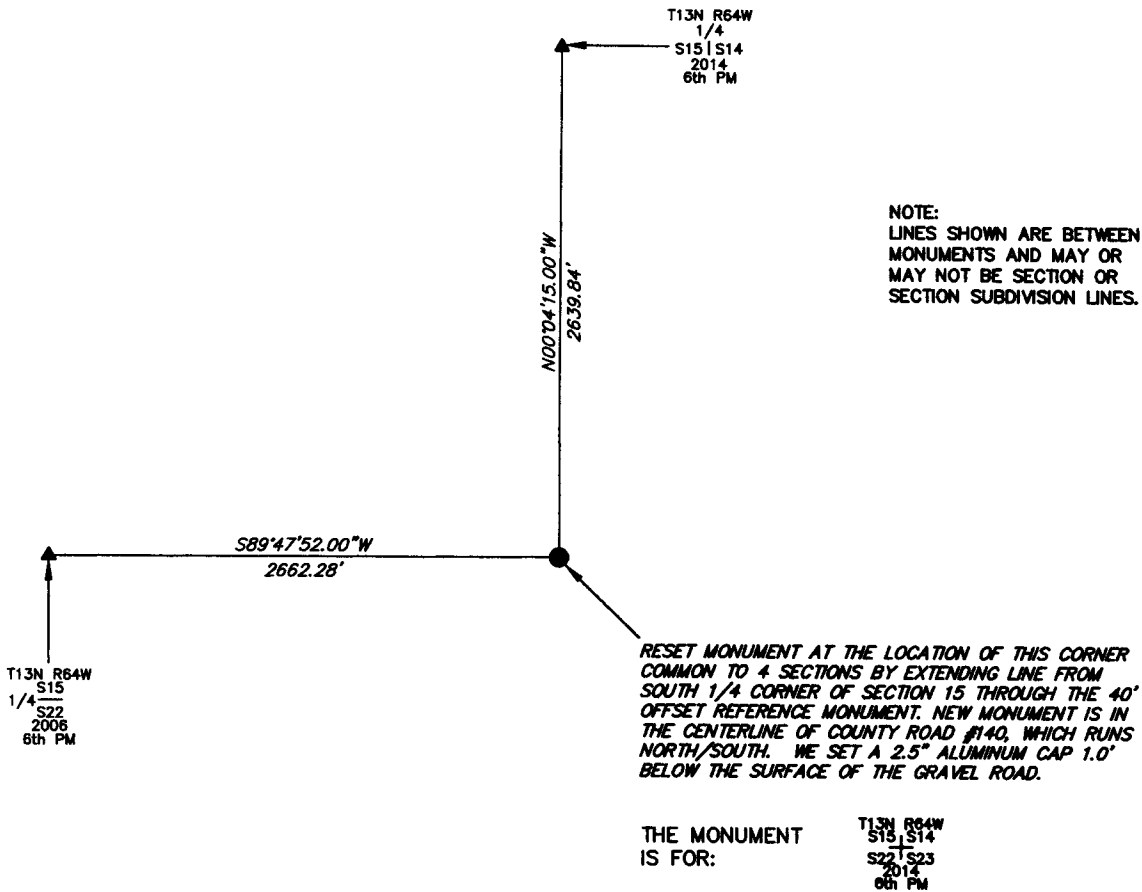
State of Wyoming Corner Record

CORNER PERPETUATION AND FILING ACT.

Regulations of the Board of Registration for Professional Engineers and Land Surveyors.)

Reverse side of this form may be used if more space is needed.

Record of original survey and citation of source of historic information (if corner is lost or obliterated). Description of corner monumentation evidence found and/or monument and accessories established to perpetuate the location of this corner. Sketch of relative location of monument, accessories, and reference points with course and distance to adjacent corner(s) (if determined in this survey). Method and rationale for reestablishment of lost or obliterated corner.



NOTE:
LINES SHOWN ARE BETWEEN
MONUMENTS AND MAY OR
MAY NOT BE SECTION OR
SECTION SUBDIVISION LINES.

RESET MONUMENT AT THE LOCATION OF THIS CORNER COMMON TO 4 SECTIONS BY EXTENDING LINE FROM SOUTH 1/4 CORNER OF SECTION 15 THROUGH THE 40' OFFSET REFERENCE MONUMENT. NEW MONUMENT IS IN THE CENTERLINE OF COUNTY ROAD #140, WHICH RUNS NORTH/SOUTH. WE SET A 2.5\"/>

THE MONUMENT IS FOR:

T13N R64W
S15, S14
S22, S23
2014
6th PM



CORNER MONUMENT SYMBOLS

- RECORD IS FOR THIS CORNER MONUMENT.
- ▲ A RELATED CORNER OR WC MONUMENT.

SCALE 1"=1000'
(EXCEPT IN TRIVIAL CASES)
BEARINGS ARE RELATED TO WGS 84 WITH GPS OBSERVATIONS
DRAWN BY: SM
P.C. T. BEASLEY
COUNTY: LARAMIE

THE MONUMENT IS MARKED

Date of Field Work: 07/26/2014 Office Reference: _____

CROSS INDEX DIAGRAM

1	2	3	4	5	6	7	8	9	10	11	12	13	14	15	16	17	18	19	20	21	22	23	24	25	
A																									
B																									
C		6		5		4		3		2		1													
D																									
E																									
F																									
G		7		8		9		10		11		12													
H																									
J																									
K																									
L		18		17		16		15		14		13													
M																									
N																									
O																									
P		19		20		21		22		23		24													
Q																									
R																									
S																									
T		30		29		28		27		26		25													
U																									
V																									
W																									
X		31		32		33		34		35		36													
Y																									
Z	1	2	3	4	5	6	7	8	9	10	11	12	13	14	15	16	17	18	19	20	21	22	23	24	25

Firm/Agency, Address

UELS, LLC

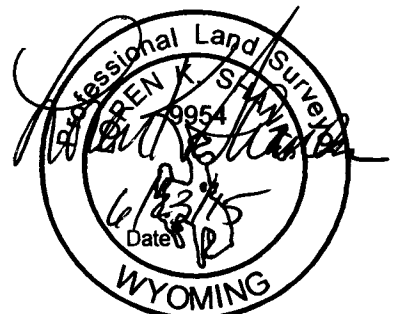
85 South 200 East

Vernal, Utah 84078

Telephone Number: 435-789-1017

This corner record was prepared by me or under my direction and supervision.

SEAL & SIGNATURE



RECP #: 670070
RECORDED 9/22/2015 AT 10:39 AM BK# 2465 PG# 78
Debra K. Lathrop, CLERK OF LARAMIE COUNTY, WY PAGE 1 OF 1